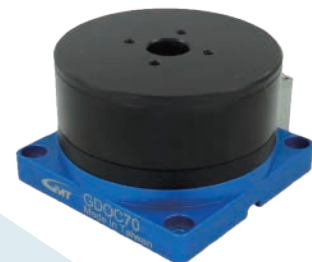
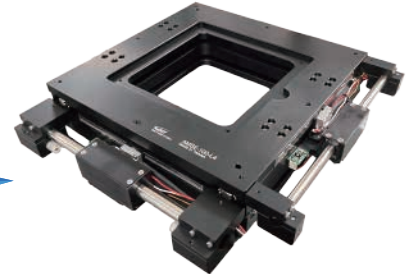
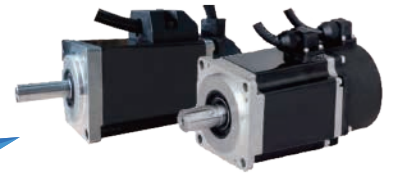




# Servo Driver - DC series

## K-SERVO

### Servo Driver



### Driver Features:

- ⊙ Power supply between 24~48V of low-voltage DC electricity input.
- ⊙ **Compact design** : driver volume minimized to save space for panel wiring.
- ⊙ **Diverse control modes** :
  - **Pulse mode** : the high-speed pulse and open collector interface takes care of compatibility with both new and old systems
  - **Communication control mode** : the ModBus RTU protocol enables precision positioning by connecting all 16 axes in series.
  - **PIO mode** : the built-in 128-point procedural table allows sequential control for users who are unable to write a program.
- ⊙ **Absolute accuracy correction Error Map function** : combined with optical ruler input and laser interferometer calibration to improve absolute positioning accuracy of the slide.
- ⊙ **2 DOF systems** : enhances following response and interference resistance.
- ⊙ **4 sets of low-frequency Vibration and 4 sets of notch filters** : improve the high-frequency noise and vibration of the mechanism once set.

### DKM: Servo motor Driver

Equipped with a 23-bit absolute encoder AC servo motor for high resolution and high positioning accuracy.

### DKL: Linear Motor Driver

Equipped with a linear motor and an external optical encoder (ABZ) to meet closed-loop control requirements.

### DKD: DD Motor Driver

Equipped with a direct drive motor with a 19-bit multi-turn absolute encoder that can control multi-turn operation and position control.

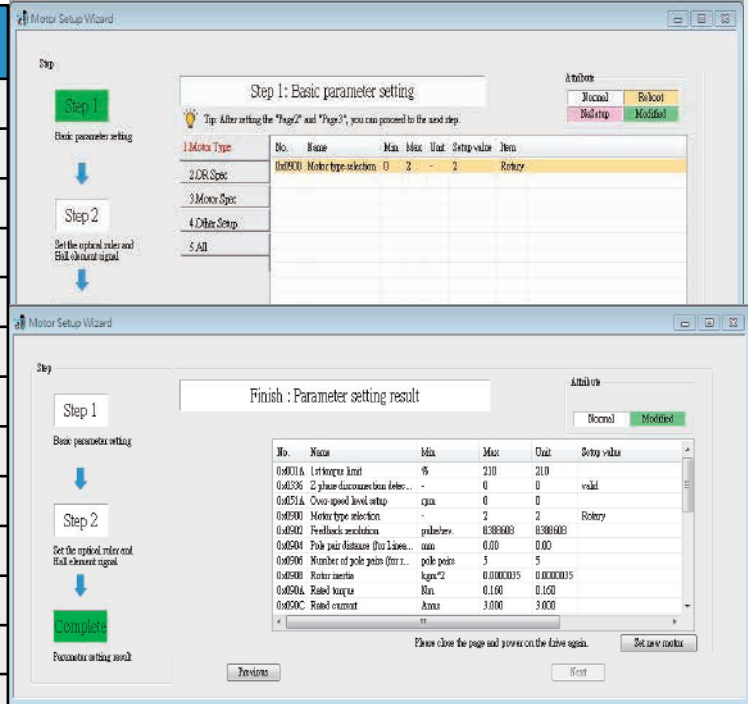
\*For related information, you can refer to the official website where you can download the operating manual for each of the drivers.



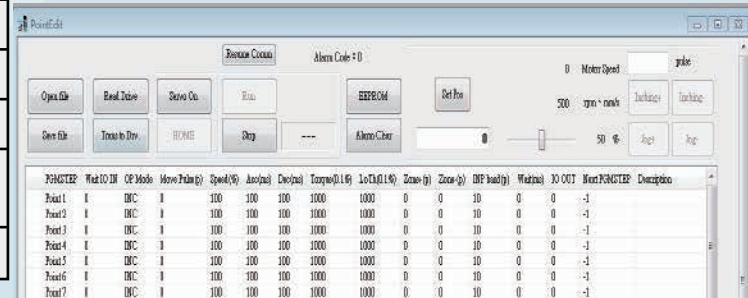
# Driver Specifications Table

Item		Description
Power	Main loop	24~48VDC ± 15%
	Rated current	6A
	Maximum current	20A
	I/O Power voltage	24VDC ± 15%
Environment	Temperature	Operating: 0~55°C; storage: -20 ~ +80°C
	Humidity	Operating/storage: below 90%RH
	Height	Below 1000 m
	Vibration	Below 5.88m/s <sup>2</sup> , 10~60Hz
Control method		MOSFET PWM sine wave driven
Encoder feedback		The RS485 half-duplex supports
Optical Linear Encoder		QEP incremental encoder
Control signal	Input	13 inputs
	Output	13 outputs
	Special output	Brake relief output
Analog signal	Input	-
Pulse signal	Input	Open Collector, High Speed Photocoupler
	Output	Motor Phase Z open collector output
Communication function	USB/RS485	Parameter Adjust mini USB interface 1:16 RS485 control interface
Control mode		(1) Position control (Pulse) (2) PIO procedural control

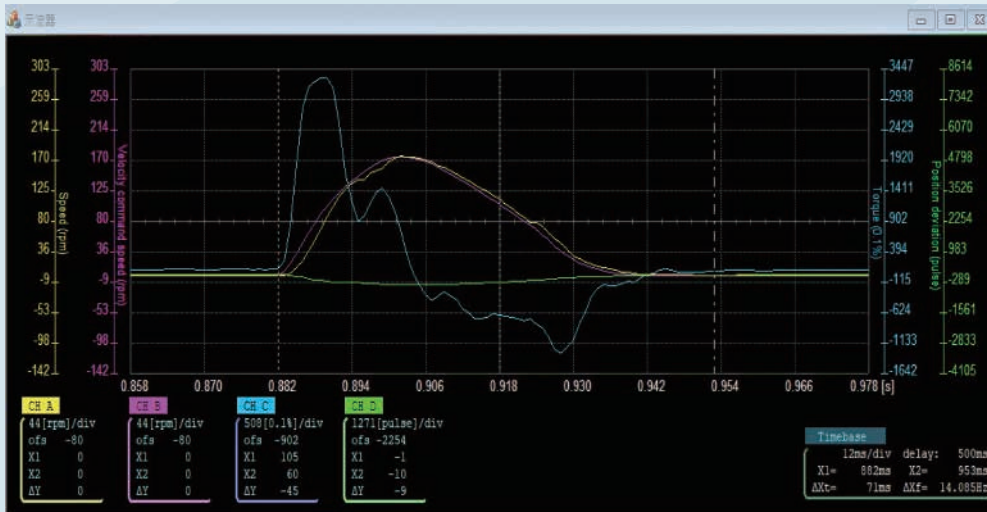
# Motor Wizard



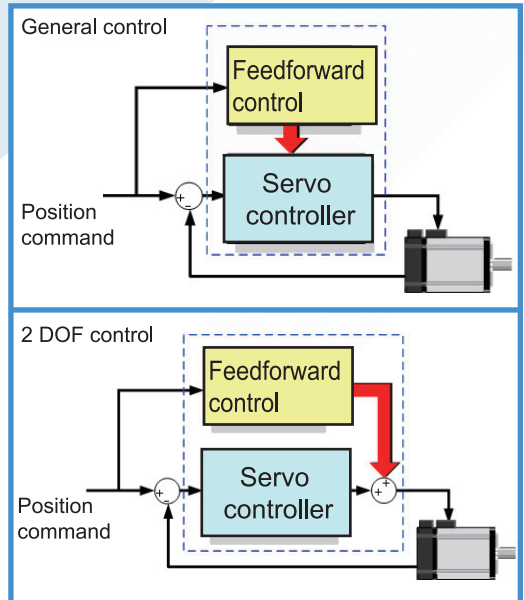
# PIOmode



# Built-in oscilloscope for parameter adjustment



# 2 DOF control



GMT GLOBAL INC.



head office :  
Global Operation Headquarter  
No. 357, Sec. 1, Yaofeng Rd., Puxin  
Township, Changhua County 513004, Taiwan  
TEL : +886-4-828-2825  
FAX : +886-4-828-2228  
E-mail : gmt@gmt.tw

Xiushui Office  
No.3, Ln. 34, Minzhu St., Xiushui  
Township, Changhua County,  
504001, Taiwan  
TEL : +886-4-768-8328  
FAX : +886-4-768-8314

Taiwan  
15F.-7, No. 286, Sec. 1, Gaotiezhanqian W. Rd.,  
Zhongli Dist., Taoyuan City 320016 ,  
Taiwan (R.O.C.)  
TEL : +886-3-452-9922 FAX : +886-3-463-6060  
No.22, Aly. 53, Ln.428, Sec. 3, Wenhua Rd.,  
Rende Dist., Tainan City 717021, Taiwan  
TEL : +886-6-270-3518 FAX : +886-6-270-3510

China  
Dongguan Ding Qi Intelligent Automation  
Technology Ltd.  
No.8 Factory ,SHUI-BIAN Industrial Zone,  
Hengli Town, Dongguan City, Guangdong  
Guangdong Province, China  
National service number : +86-400-770-6066